



SAMPSON COUNTY  
911 & ES  
FACILITIES

CLINTON,  
NORTH CAROLINA

CONSTRUCTION  
DOCUMENTS

WALL SECTIONS

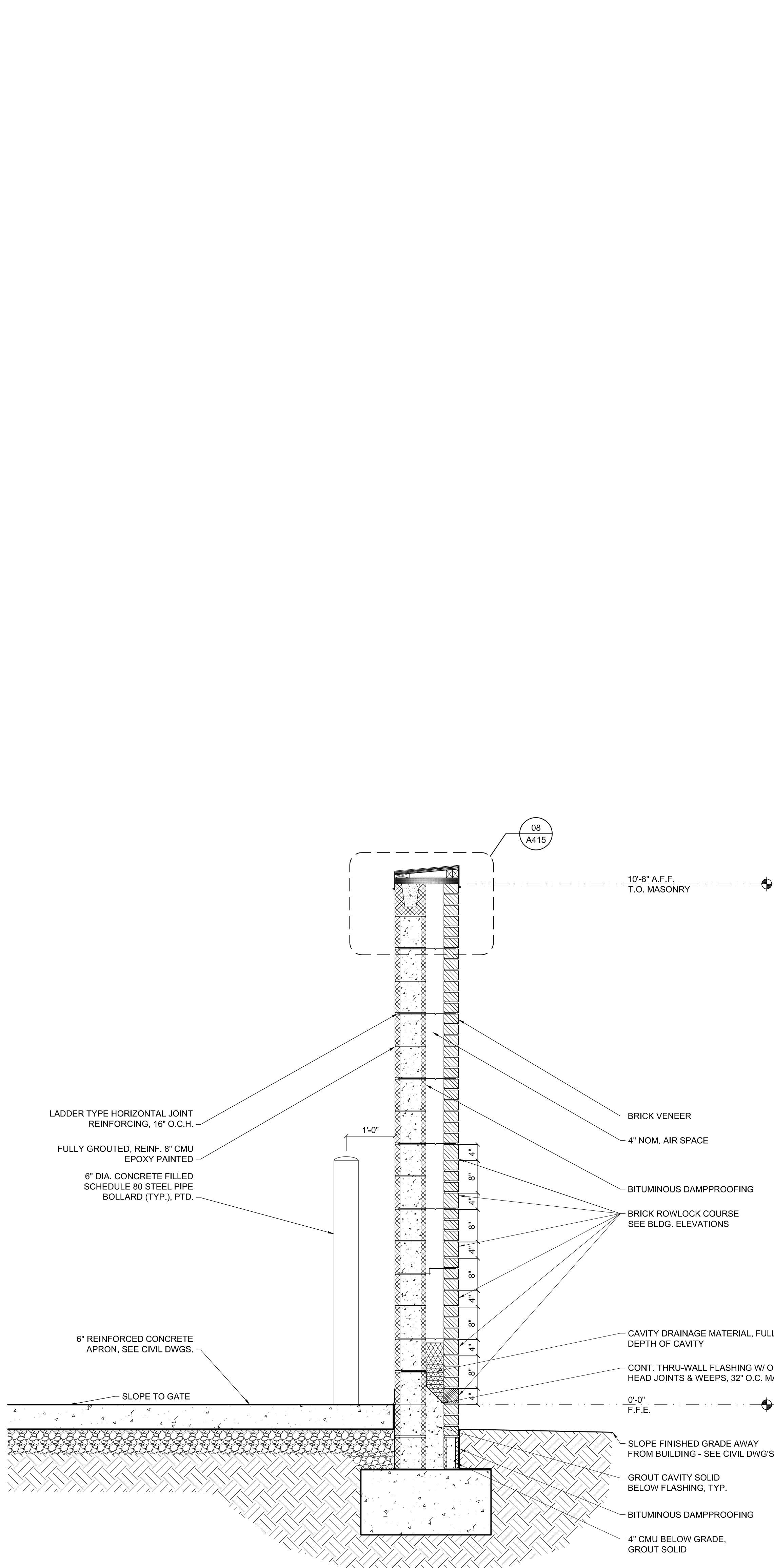
|            |            |              |
|------------|------------|--------------|
| DATE       | 12.04.2020 |              |
| PROJECT NO | 20003      |              |
| REVISIONS  |            |              |
| NUM.       | DATE       | DESCRIPTION: |
| REV1       | 12/17/20   | REVISION 01  |

THIS DRAWING IS THE PROPERTY OF ADW ARCHITECTS, P.A. AND SHALL NOT BE REPRODUCED OR COPIED IN WHOLE OR IN PART. IT SHALL NOT BE USED ON ANY OTHER PROJECT OR GIVEN TO ANY OTHER COMPANY OR AGENCY WITHOUT THE CONSENT OF ADW ARCHITECTS, P.A.

12-17-20  
SEAL

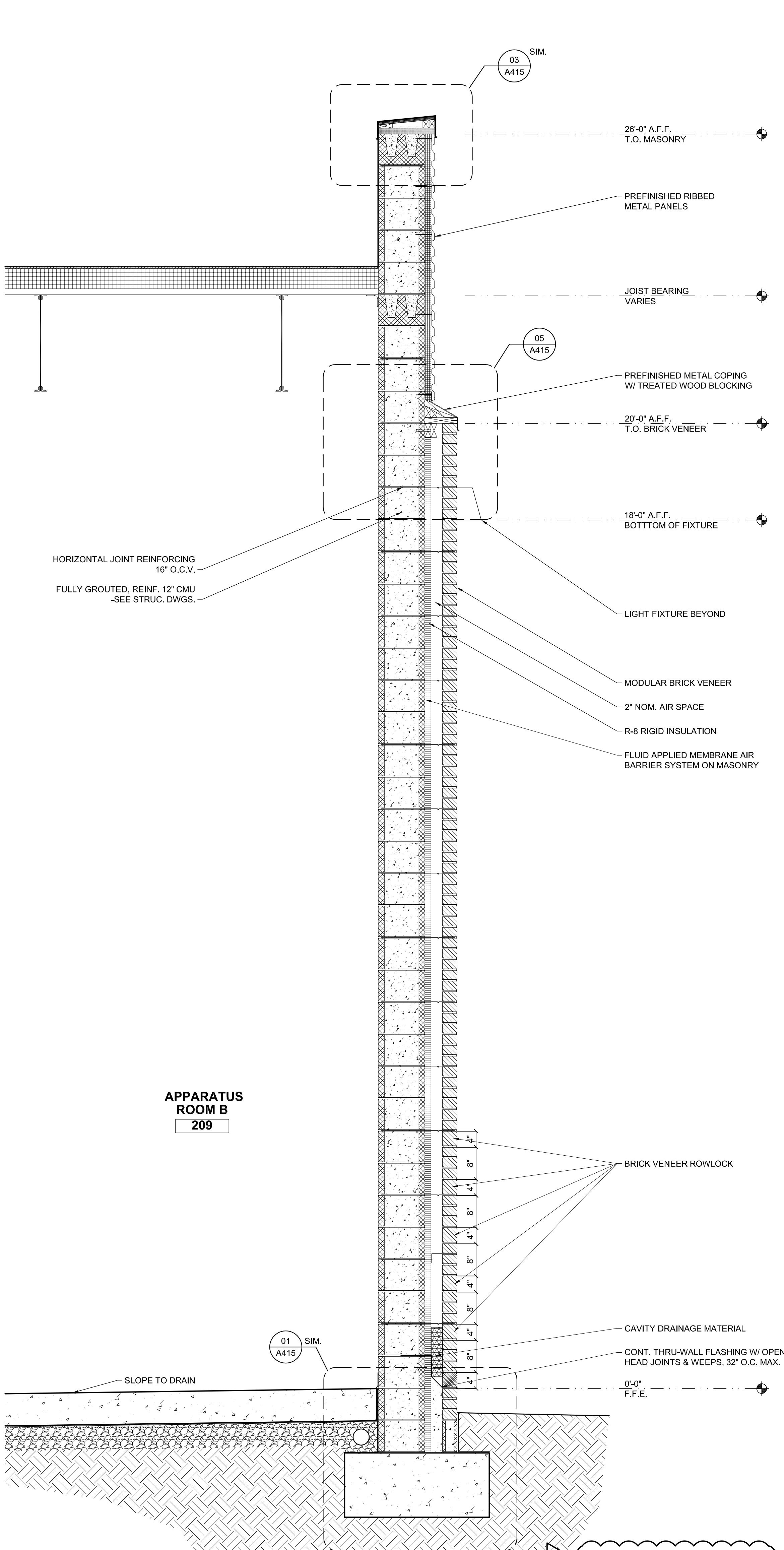
SHEET NUMBER

A413



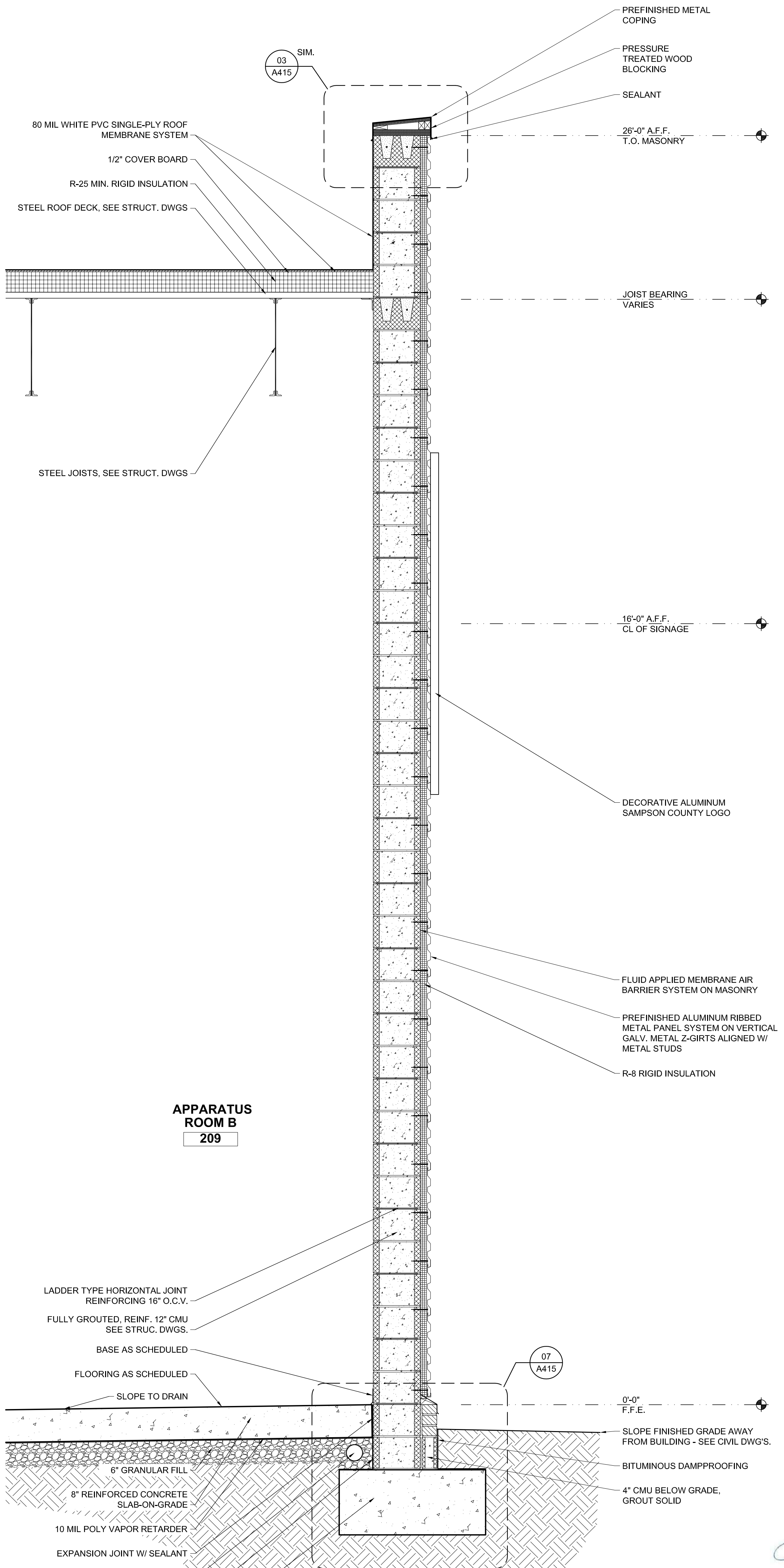
REV 1 GENERAL NOTE COORDINATION

WALL SECTION SCALE: 3/4" = 1'-0" 03



REV GENERAL NOTE COORDINATION  
SEE PREVIOUS SECTIONS FOR BALANCE OF TYPICAL INFORMATION

WALL SECTION SCALE: 3/4" = 1'-0" 02



REV GENERAL NOTE COORDINATION

WALL SECTION SCALE: 3/4" = 1'-0" 01